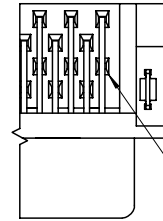
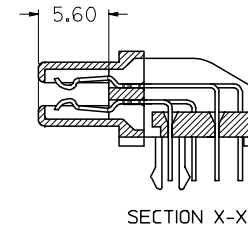
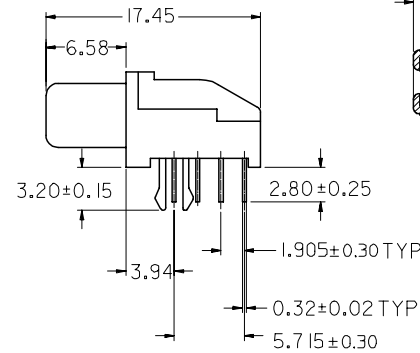
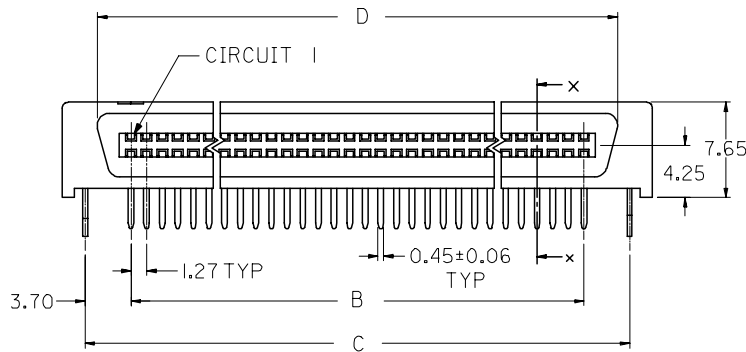
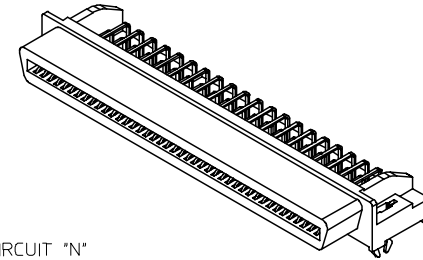


FOR CIRCUIT SIZES 68 AND 80 ONLY



FOR CIRCUIT SIZE 50 ONLY



**NOTES:**

1. MATERIAL: HOUSING -- HIGH TEMP. THERMOPLASTIC, UL94-V0  
TERMINALS -- COPPER ALLOY
2. PLATING:  
 2A 0.75µM MIN. GOLD IN SELECTIVE CONTACT AREA AND  
 2.5µM MIN. TIN IN SOLDER TAIL AREA, BOTH  
 OVER 1.27µM MIN. NICKEL.
3. ASSEMBLY MATES WITH MOLEX P/N 71661-\*\*\*\*.
4. RECOMMENDED P.C. BOARD THICKNESS IS 1.60MM.
5. PRODUCT SPEC. NO.: PS-87552-006
6. SEE TABLE ON SHEET 2 FOR ASSEMBLY PART NUMBERS.

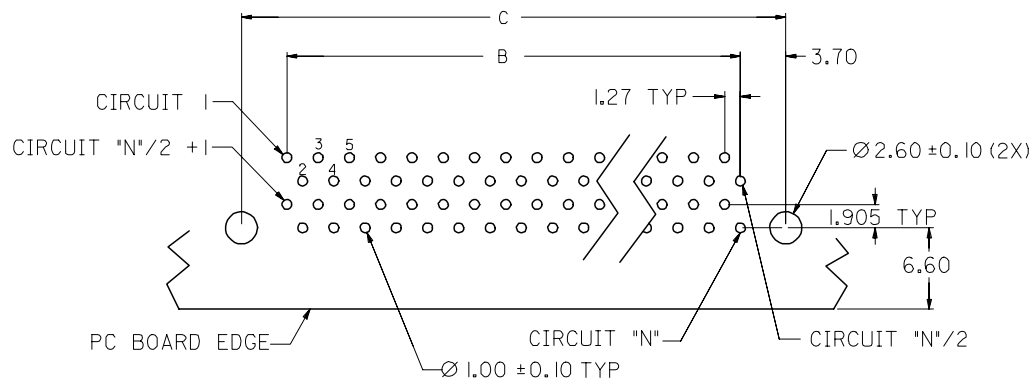
REVISED	EC NO: S2008-0347	2007/11/12	DRWN:SKANG	2007/11/12	CHKD:ATSEE	2007/11/14	APPR:MLONG	2007/11/14
H3	REV	DESCRIPTION	QUALITY SYMBOLS	▽=0	▽C=0			

GENERAL TOLERANCES (UNLESS SPECIFIED)	
mm	INCH
4 PLACES ± ---	± ---
3 PLACES ± ---	± ---
2 PLACES ± 0.3	± ---
1 PLACE ± ---	± ---
ANGULAR ± 3 °	
DRAFT WHERE APPLICABLE MUST REMAIN WITHIN DIMENSIONS	

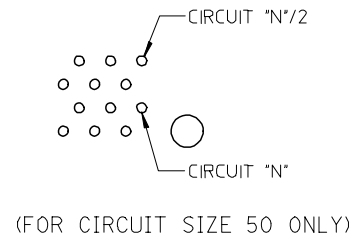
DIMENSION STYLE		SCALE	DESIGN UNITS	THIRD ANGLE PROJECTION
MM ONLY		NTS	METRIC	☉
DRAWN BY	DATE	TITLE		
DS0H	1997/04/01	EBBI, 1.27MM PITCH RECEPTACLE, R/A		
CHECKED BY	DATE			
KCL ING	1997/05/06			
APPROVED BY	DATE			
SKT0H	1997/05/08			
MATERIAL NO.	DOCUMENT NO.			
	SD-87552-007			
SIZE	THIS DRAWING CONTAINS INFORMATION THAT IS PROPRIETARY TO MOLEX INCORPORATED AND SHOULD NOT BE USED WITHOUT WRITTEN PERMISSION			
A3				

MOLEX INCORPORATED	SHEET NO. 1 OF 2
--------------------	------------------

	10	9	8	7	6	5	4	3	2	1
	D	C	B	A	CKT SIZE	ASSEMBLY PART NUMBER				
F	36.02	37.88	30.48	41.70	50	87552-0507				
	47.45	49.31	41.91	53.13	68	87552-0687				
	55.07	56.93	49.53	60.75	80	87552-0807				



RECOMMENDED PC BOARD LAYOUT  
COMPONENT SIDE  
(FOR CIRCUIT SIZES 68 AND 80 ONLY)



REVISED EC NO: S2008-0347 DRWN:SKANG CHKD:ATSEE APPR:MLONG	2007/11/12 2007/11/12 2007/11/14	DESCRIPTION H3	QUALITY SYMBOLS	GENERAL TOLERANCES (UNLESS SPECIFIED)	DIMENSION STYLE		SCALE	DESIGN UNITS	THIRD ANGLE PROJECTION	
			$\nabla=0$ $\nabla C=0$		MM ONLY		NTS	METRIC		
					mm	INCH	DRAWN BY	DATE		TITLE
					ANGULAR $\pm 3^\circ$		DSOH	1997/04/01		EBBI, 1.27MM PITCH RECEPTACLE, R/A
				4 PLACES $\pm$ ---	$\pm$ ---	CHECKED BY	DATE			
				3 PLACES $\pm$ ---	$\pm$ ---	KCLING	1997/05/06			
				2 PLACES $\pm 0.3$	$\pm$ ---	APPROVED BY	DATE			
				1 PLACE $\pm$ ---	$\pm$ ---	SKTOH	1997/05/08			
						MATERIAL NO.		DOCUMENT NO.	SHEET NO.	
				DRAFT WHERE APPLICABLE MUST REMAIN WITHIN DIMENSIONS	SEE TABLE		SD-87552-007		2 OF 2	
					SIZE		THIS DRAWING CONTAINS INFORMATION THAT IS PROPRIETARY TO MOLEX INCORPORATED AND SHOULD NOT BE USED WITHOUT WRITTEN PERMISSION			